

THE F.C.C.

CHRISTMAS



AND YOU



Or everything you need to know about Part 15

LEGAL FM BAND



88mhz – 108mhz

Or

88.1 – 107.9

Although an operator does not have to obtain a license to use a Part 15 transmitter, the transmitter itself is required to have an FCC authorization before it can be legally marketed in the United States. This authorization requirement helps ensure that Part 15 transmitters comply with the Commission's technical standards and, thus, are capable of being operated with little potential for causing interference to authorized radio communications.

If a Part 15 transmitter does cause interference to authorized radio communications, even if the transmitter complies with all of the technical standards and equipment authorization requirements in the FCC rules, then its operator will be required to cease operation, at least until the interference problem is corrected..



Trade name
Model number



Trade name
Model number

Assembled from tested components
Complete system not tested



C. CRANE
69.99



WHOLE HOUSE TRANSMITTER 2.0
110.00



ACC100 Part 15 FM Transmitters

The ACC100 transmitter is a mono FM transmitter which is identical to our FMX transmitter except it is an assembled FCC Part 15 Certified FM Transmitter (FCC ID: MBMACC100). The ACC100S FM transmitter is a Stereo version with a built in compressor/limiter for perfect audio levels and outstanding stereo separation. Output power is limited to part 15 regulations (approximately 10mW). Both ACC-100 FM transmitters include a fixed wire antenna, enclosure, T2 power supply, RCA audio cable, and complete operating instructions.

MONO 199.00

STEREO 399.00

ANTENNA REQUIREMENTS

Changing the antenna on a transmitter can significantly increase, or decrease, the strength of the signal that is ultimately transmitted. Except for cable locating equipment, the standards in Part 15 are not based solely on output power but also take into account the antenna characteristics. Thus, a low power transmitter that complies with the technical standards in Part 15 with a particular antenna attached can exceed the Part 15 standards if a different antenna is attached. Should this happen it could pose a serious interference problem to authorized radio communications such as emergency, broadcast and air-traffic control communications.

In order to prevent such interference problems, each Part 15 transmitter must be designed to ensure that no type of antenna can be used with it other than the one used to demonstrate compliance with the technical standards. This means that Part 15 transmitters must have permanently attached antennas, or detachable antennas with unique connectors. A "unique connector" is one that is not of a standard type found in electronic supply stores.

Section 15.203

It is recognized that suppliers of Part 15 transmitters often want their customers to be able to replace an antenna if it should break. With this in mind, Part 15 allows transmitters to be designed so that the user can replace a broken antenna. When this is done, the replacement antenna must be electrically identical to the antenna that was used to obtain FCC authorization for the transmitter. The replacement antenna also must include the unique connector.

PENALTIES

The FCC rules are designed to control the marketing of low-power transmitters and, to a lesser extent, their use. If the operation of a non-compliant transmitter causes interference to authorized radio communications, the user should stop operating the transmitter or correct the problem causing the interference. However, the person (or company) that sold this non-compliant transmitter to the user has violated the FCC marketing rules in Part 2 as well as federal law. The act of selling or leasing, offering to sell or lease, or importing a low-power transmitter that has not gone through the appropriate FCC equipment authorization procedure is a violation of the Commission's rules and federal law. Violators may be subject to an enforcement action by the Commission's Field Operations Bureau that could result in:

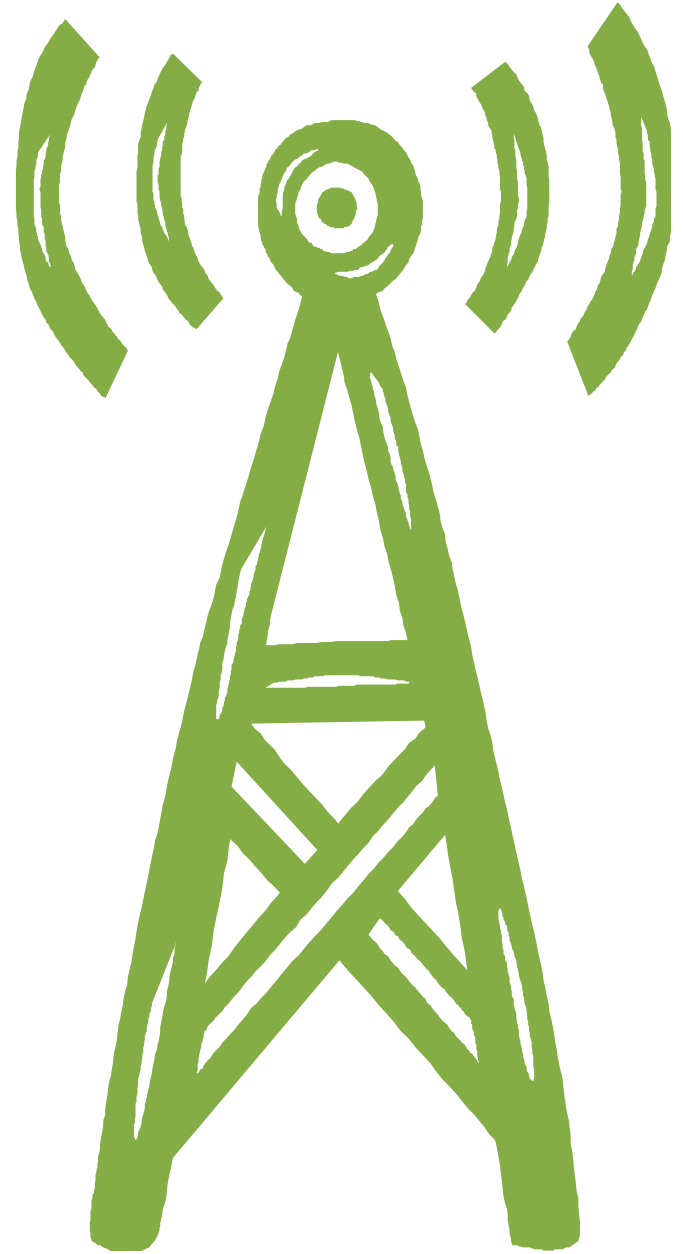
- o forfeiture of all non-compliant equipment
- o \$100,000/\$200,000 criminal penalty for an individual/organization
- o a criminal fine totalling twice the gross gain obtained from sales of the non-compliant equipment
- o an administrative fine totalling \$10,000/day per violation, up to a maximum of \$75,000

BASIC RULES

Effective Radiated Power 0.01 microwatts
Rule specifies a limit of 250 $\mu\text{V}/\text{meter}$ at
3 meters

Approx. Maximum Coverage Radius 200ft

No restrictions on content or hours of
operation



Station Identification

For licensed Radio Stations the rule is:
As close to the top of the hour as possible during a natural break in the programming

There are no such requirements for Part 15 Stations. You can use whatever ID you wish as long it is not being used by a station in your area.